



Priory School

Residential Department

# Student Information Booklet



## and Statement of Purpose



## What is boarding all about?

Boarding is all about having fun with your friends. It is giving you an opportunity to spend time with your friends outside of day school and away from your home environment.



Boarding focuses on positive behaviour, communication, independence, organisation, leadership and healthy lifestyle. You will learn plenty of new skills such as, how to make your bed and complete other daily living tasks. We will set you targets every term to work towards. Our aim is to 'improve attitudes to learning through experiencing success'.



# How does boarding work with school?

Boarding takes place after school. You spend your evening with us doing various activities, we all have tea together, you go to bed and in the morning you return to school in time for registration.



In boarding, we have homework and reading sessions every day.

We work on skills that can help you during the school day and in every day life.

In boarding we use the rooms that are available to us in school such as the hall, gym, classrooms, skills centre kitchen to name a few.

# Arriving at Boarding

If you are KS2 you will be collected from your classroom at the end of the school day and brought to the hall.

If you are KS3 or KS4, you will be called for boarding like you are for your taxi. When you are called for boarding residential staff will meet you in the school hall.

Residential staff will then bring you down to your house when everybody is ready.



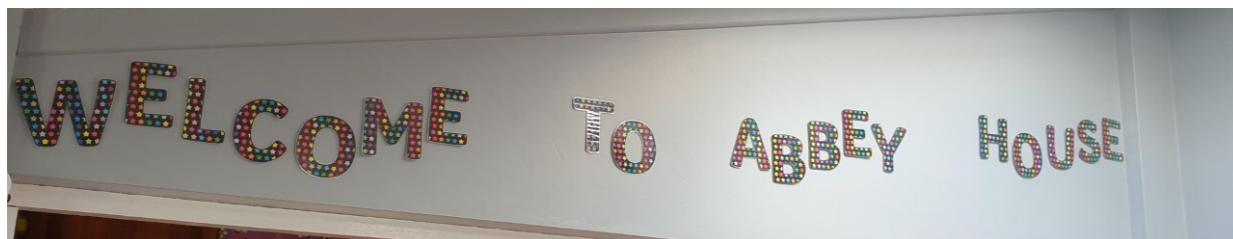
# The Boarding Houses

We have 2 houses in boarding, Priory House and Abbey House.

Priory House is our smaller house and can have up to 10 students in it.



Abbey House is our bigger house and can have up to 13 students in it.

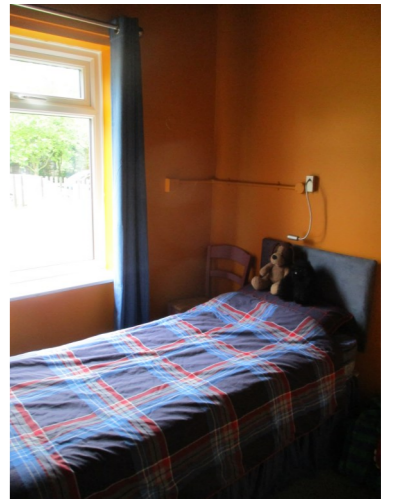


Both houses have bedrooms and bathrooms upstairs and downstairs.

Both houses follow the same routines every evening and morning.

# The Bedrooms

In Priory House we have 2 single rooms and 1 shared room downstairs that has 4 beds in it. Upstairs we have 1 shared room that has 4 beds in it.



In Abbey House we have 4 single rooms and 1 shared room downstairs that has 4 beds in it.



Upstairs we have 1 single room and 1 shared room that has 4 beds in it.



On your first day of boarding you will be shown where your bed is. You will sleep in the same bed every week.

# Toilets and Baths/showers

There is a toilet and a bathroom near every bedroom. Toilets and bathrooms are shared with the other students in your house. You will be shown where the toilet and bathroom is that you will be using.



# Clothes

Casual clothes/home clothes can be worn after school. You will be able to get changed when it is time to make your bed. School uniform must be worn for school.



# Snacks and Meals

After school we will have fruit and a drink of squash.



We have a variety of food on offer throughout the term and we put the menu's up in the houses for you to see. There is always a salad selection to accompany tea and yoghurts, fruit or jelly for pudding. We have dinner in the houses 3 x a week and in the dining hall once a week.



# Bedtime

KS2 go to bed at 20.30

KS3 go to bed at 20.45

KS4 go to bed at 21.00

# Activities

Every evening we will have 2 or 3 activities on offer. You get to choose which one you would like to participate in. You are welcome to offer your suggestions which we will try to make available. Our activities take place on and off school site. Activities vary from:



# Items from Home

All valuable items such as phones, game's consoles, tablets will be signed into our valuables draw for safe keeping. These will be returned to you when you leave for school in the morning .



Teddy bears

and blankets can be kept in your bed space ready for bedtime.



# Calling Home

You can call home in the evening using the phones in the houses.

Your own mobile phones cannot be used and will be stored in the valuables cupboard.



Colour me in



Complete this residential wordsearch

A	L	D	B	N	F	P	E	A
P	R	I	O	R	Y	A	P	B
E	T	N	A	P	S	N	A	B
E	P	N	R	A	L	B	R	E
L	A	E	D	N	I	O	K	Y
S	F	R	I	E	N	D	S	N
F	U	L	N	A	K	S	M	E
A	N	E	G	C	A	N	A	P
B	R	E	A	K	F	A	S	T

Priory

Abbey

Boarding

Link

Fun

Friends

Sleep

Breakfast

Parks

Dinner

# Staff

We have 7 members of staff that work in the houses with you. You can talk to a member of staff of your choice or your key worker at any time or if you are worried or upset.

Ms Allen Mrs Klaczok Mrs Hall



Miss Copping



Miss Palmer (MAT Leave) is also our Senior Residential and Activities Child Care.

Miss McDougall is filling in while she is off.



Mrs Parkington (MAT Leave) will also be around every morning and evening. She is the residential manager and makes the big decisions.

# Help and Support

As well as the care staff we have independent listeners that visit the department on a monthly basis. They come in and spend time with you during activities and check that everything is ok.

Their names are:

Mrs Truman



Mrs Blady



We have a comment box in the houses for them, an email address you can contact them on and their phone numbers.

The email address is:

[listener@priory.sendat.academy](mailto:listener@priory.sendat.academy)

If you are feeling unhappy and do not feel like you can talk to care staff, day staff, family or the independent listeners then you can contact:



You can contact them anytime for free



**We hope you  
enjoy boarding  
as much as we do!**

