



Welcome to the Residential Department

Improving attitudes to learning through experiencing success

Introduction:

Welcome to our parents and carers guide to the residential provision. We hope this guide will provide you with a clearer understanding of the residential department and how to start the process of securing a placement for your child if you are interested.

What we offer:

We provide residential placements for up to 12 students per night, Monday to Thursday inclusive, for boys aged between 8 and 14 years old. The 12 bedrooms are single rooms for each individual child. We have two sections, one for under 12s and one for over 12s.

The majority of our placements are overnight placements but we do offer a 'link' induction program. This is for students who are a little unsure or worried about fully committing to a residential placement. It enables them to get to know the staff and students they will be spending time with and have an understanding of the department prior to staying overnight. Students join the department at the end of the school day, take part in a variety of activities and have tea before being collected later on in the evening. During the link programme, parents/carers, the student and residential staff will decide if an overnight placement is in the best interests of the student at this time.

Aims and Objectives

Residential placements are provided specifically for students who require additional '24 hour curriculum' support to enable them to reach their full potential in all areas including academic, emotional and both life and social skills. We offer extra-curricular and social opportunities in order to ensure their individual additional needs are met.

Our aim is to help students recognise that:

I can achieve

I can be successful

I can build and maintain appropriate relationships

I can achieve a level of independence and self-reliance

I can behave appropriately

I can communicate my needs, thoughts and feelings

Recognising that they can be successful improves confidence, self-esteem and their general attitude towards learning.

When students first access the residential department, the care staff will work with their form tutors to have an understanding where their current level in Independence and Advanced Independence Skills, Organisation, Communication and Social Interaction, Positive Behaviour and Leadership. As we work with each child in residential we will gain an understanding on their Hygiene, Healthy Lifestyle including medication, Resilience, Community Spirit and social interaction with the outside world. We will measure the progress made by every student in these areas on a termly basis. This data will help us set targets and achievements that will further stretch their confidence and success.

From these assessments the students will be set 4 targets every term, one of their choice, one of their key workers choice and the last will be a target for the home environment that will be chosen by the parents/

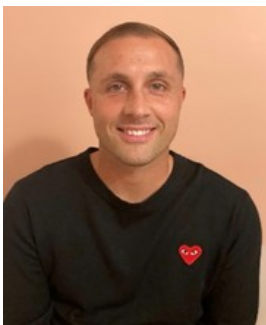
Meet the team:

Head of Care: Mrs Sarah Chesterton



Level 5 Diploma in Leadership and Management for Residential Childcare
Level 4 Leadership and Management/Registered Managers Award

Deputy Head of Care: Mr Byron Higgins



Level 5 Diploma in Leadership and Management for Residential Childcare
Level 3 Diploma in Residential Child Care
Level 3 Sports Coaching and Facility Operation

Senior Residential and Activities Child Care Officer: Ms Kat Clifford



Level 5 Diploma in Leadership and Management for Residential Childcare
Level 3 Health and Social Care in Adults

Residential and Activities Child Care Officer:

Helen Pepper

Full Time



Taylor Stubbings

Full Time



Vacant Post

Part time



All of the Residential and Activities Child Care Officers have or are working towards a level 3 Diploma in Children and Young People in the Workforce or equivalent.

For a full list of qualifications for all of the residential team please look at the residential statement of purpose.

Facilities and Accommodation:

Our residential area is on the upper floor of the main building. We have 12 single bedrooms for the children. A staff sleep room on one end of the building with a bathroom and another staff sleep room with ensuite in the middle. We have a lounge with a large digital TV and games, a gaming room with consoles, fuzzleball table and a reading book shelving unit.

There is also a first aid and medication room and the residential office which consists of a table and 6 chairs and 2 PC's.

We have our meals in the dining room and have a cook that prepares our meals in the main kitchen. On nights when the children cook we go over to the school kitchen.

Outside we have an outer door cupboard that stores all our garden games, scooters, balls, rackets and water game equipment.

To ensure the safety and security of residential students and the premises we have a door alarm system. The main doors into the boarding houses, the corridor doors and the bedroom doors are alarmed as soon as the students have settled down for the night. If any of the doors are opened it activates the alarm in the staff bedrooms. Bedroom windows have restricted opening. Two members of the care staff team will sleep in every evening, one being management. Please note, we do not have any waking night staff.



Activities:

Our evening activity programme is designed to improve attitudes to learning through experiencing success. The students are asked for their suggestions and where possible (and practicable) we facilitate, offering a choice of 2, 3 or 4 activities each evening. Each evening the activities on offer will change giving the students a variety of activities throughout the term. All activities are organised and run by the care officers and they take place on the school site and off site. Community based activities require careful planning and risk assessing to make sure they are safe and staffed well enough. We like to make sure all our off site activities are inclusive for all students, therefore these do not take place every week but we offer them as much as we can with minimal cost implications.

Examples of on site activities on offer are: various art and craft sessions, gaming, baking, football and physical activity. Examples of offsite activities on offer are: Walks, litter picking in the local community, bowling, swimming, crabbing farms and parks. We mark the end of each term in a variety of ways, for example cinema outings to the beach etc.

RAPS and REWARD TARGETS

The boys are given 4 targets one of which they set, one from parent/carer and two from keyworker/care staff.

These targets will coincide with life skills, social skills and independence.

When met the boys will receive a small token to purchase a small gift then when achieved at the end of term a bigger prizes like trip to cinema or zoo or meal out is rewarded.



Daily schedule:

07.30	Students are woken. Wash, dress, daily 'house' jobs, administer medication
07.55	Make beds, clean teeth and prepare for school
08.45	Breakfast all together
09:00	School
15.10	House meeting
15.30	Activity 1
17:00	Dinner Time
17:30	Activity 2
19.00	Evening routines (free time, baths, showers, TV, music). Link students collected
20.30	Bedtime for Key Stage 2
21.00	Bedtime for Key Stage 3

Visitors:

Throughout the academic year we have numerous visitors come into the residential department to monitor the welfare of the students within the department. These visitors are:

Independent Listeners: Monthly visits

Standard 3 (safeguarding) visits: 1/2 termly visits

Governors visits: Termly visits

Ofsted Inspectors: Annual visits (1st April—31st March)

All our visitors have the relevant DBS checks .

If you are interested in a residential placement for your child then please fill in the referral form and return to school or email it to Sarah.Chesterton@chalkhill.sendat.academy. If you require more information or would like to discuss further please feel free to contact the department on the school number 01787 373583 or via the email listed above.

Please be aware that a residential placement is not always appropriate or suitable for all children and we can only offer placements as and when spaces are available. We may not be able to accommodate your child straight away but will add your child's name to the waiting list.



Chalk Hill Academy

Residential Department Referral Form

Student Name:	DOB:
Home Address:	School year group:
Name of parent/carer:	Contact details:

Please specify the reason for your referral:

Please indicate below the desired outcomes for your child

- ☐ To recognise they can achieve things
- ☐ To recognise they can be successful
- ☐ To build and maintain positive relationships
- ☐ To achieve a level of independence and self resilience
- ☐ To behave appropriately
- ☐ To communicate their needs, thoughts and feelings.
- ☐ Other (Please specify in the space below):

Please provide information of any clubs your child currently attends and the days they run:

Signed:

Date: